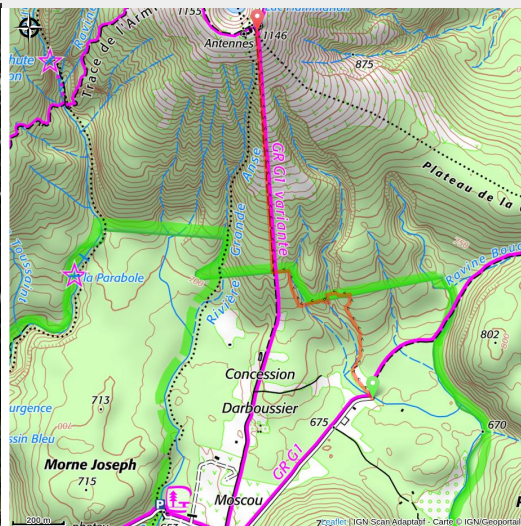


# Trace des Poteaux

Basse-Terre Sud - Trois-Rivieres



montée vers La Citerne (PNG)



*A slope towards the extinct volcano, La Citerne, and Lake Flammarion. A trail for the physically fit !*

*Please note, there is a new route leaving from the end of Route de Moscou (since April 2021).*

## Useful information

Practice : Walking

Duration : 1 h 30

Length : 1.9 km

Trek ascent : 457 m

Difficulty : Difficult


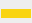
Type : Cross

Themes : Geology

# Trek

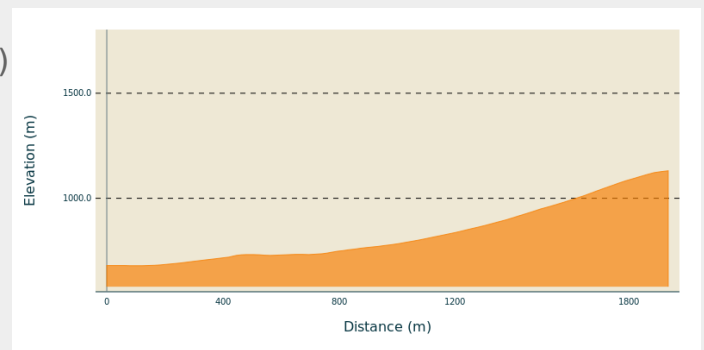
**Departure** : End of the Route de Moscou (access from Gourbeyre, Palmiste plateau)

**Arrival** : La Citerne (old road)

**Markings** :  GR (long hike network)  PR (short hike network)

**Cities** : 1. Trois-Rivieres  
2. Capesterre-Belle-Eau

## Altimetric profile



Min elevation 679 m Max elevation 1131 m

From the end of Route de Moscou, take the track up and follow the new markings (made in 04.2021). Walk up to the edge of the gully, then take the track again at the edge of the Park. Then follow the power line through the forest, which gradually thins out. Go up the steep path to the summit of La Citerne, still following the electricity poles.

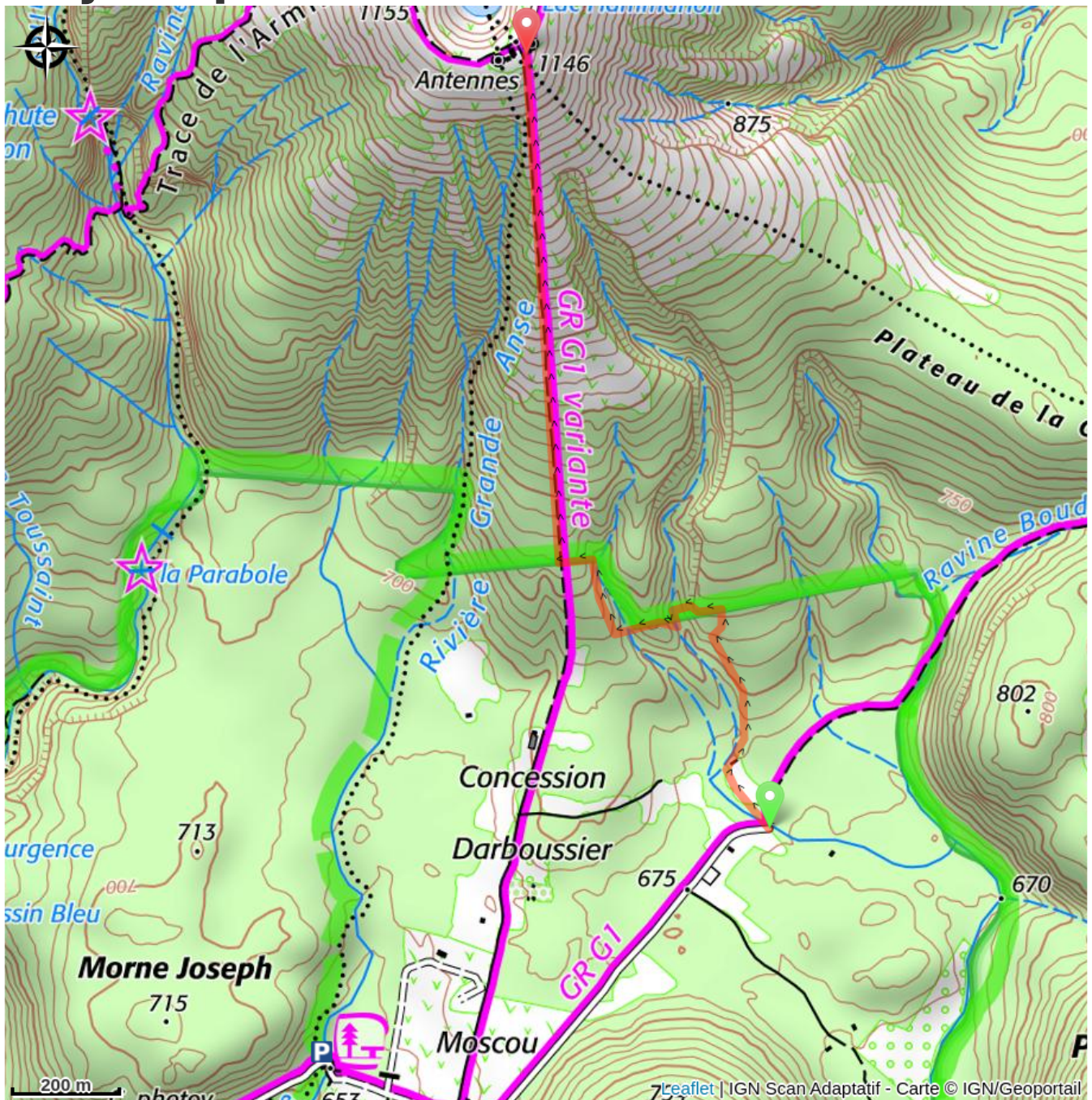
From there are links to other trails: L'Echelle, La Soufrière, L'Armistice, etc. Plan to have a vehicle at the planned point of arrival in Les Bains Jaunes or else follow the Trace des Poteaux on the way back, too (Please note, difficult descent).

---

*NB: this route is a section of a variation on the "Trace des Alizés" GR trail (a shortcut to La Citerne refuge, avoiding the Trace des Etangs and going up the RD4 Carbet road).*



# On your path...



# All useful information

## **Is in the midst of the park**

The national park is an unrestricted natural area but subjected to regulations which must be known by all visitors.

## **Advices**

In this natural setting, you should be particularly careful and alert, since Guadeloupe is subject to natural risks. It is vital to act in a responsible way, so that everyone can enjoy the hike!

*Please note: unsupervised car park.*

## **How to come ?**

### Transports

En Guadeloupe, 2 applications pour le covoiturage :

Déposé : <https://depoze.fr>

KAROS : <https://www.karos.fr>

### Access

**GPS starting point: Lat: 16,01933°N - Long: 61,65057°W.**

---

From the town of Gourbeyre, go up towards the "Palmiste" (RD10 road). One kilometre after the water tower (right-hand side of the road), you will arrive at a small crossroads. Turn left towards "Moscou" and the Bassin Bleu. Continue along the road. Go past the access to the Bassin Bleu, then follow the main road. Go past the refuge (SPA), the field of solar panels and the picnic area next to the small bridge. Continue to the end of the road at the entrance to the forest. Park near the road, without obstructing pedestrians and traffic.

### Advised parking

Start: end of the Route de Moscou (access from Gourbeyre, Palmiste plateau).

## **i** Information desks

### **Headquarters of the National Park of Guadeloupe**

Montéran, 97120 Saint-Claude

[info@randoguadeloupe.gp](mailto:info@randoguadeloupe.gp)

Tel : 0590 41 55 55

<http://www.guadeloupe-parcnational.fr/fr/des-decouvertes/ou-sinformer/siege-de-saint-claude>



## **Source**

Rando Guadeloupe

<https://www.randoguadeloupe.gp/>