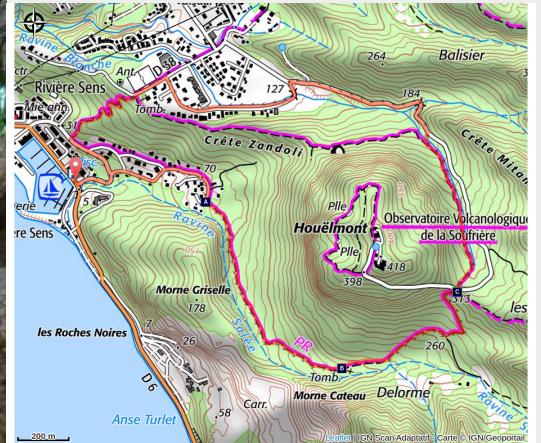


# Houëlmont tour

Basse-Terre Sud - Gourbeyre



forêt sèche (PNG)



*This is a walk with a chance to discover or rediscover new landscapes, the area's history and the contribution made by its fauna and flora over time.*

*A trail rich in history, focusing on the native Americans, Delgrès and his men. On the way it tells the story of the men whose graves alone bear witness to their lives here.*

## Useful information

Practice : Walking

Duration : 2 h 30

Length : 5.6 km

Trek ascent : 336 m

Difficulty : Easy

Type : Loop

Themes : Cultural and architectural heritage, Geology, Top 10

# Trek

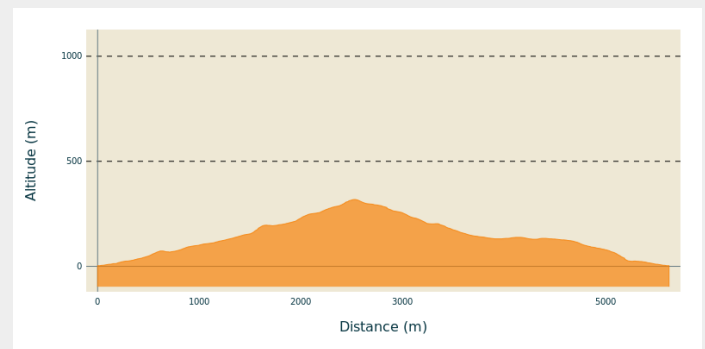
**Departure** : Rivière Sens marina, Gourbeyre.

**Arrival** : Rivière Sens marina, Gourbeyre.

**Markings** :  PR (short hike network)

**Cities** : 1. Gourbeyre

## Altimetric profile



Min elevation 3 m    Max elevation 318 m

### Follow the yellow markings.

At the end of the straight line on the marina road, turn left before the Ravine Salée bridge.

At the intersection, turn right into the estate.

Continue as far as the steep but short climb.

Follow the trail in the forest near the panel, after reading the information.

Follow the yellow markings, going up towards Houëlmont.

Cross the road (access to the Volcanological Observatory) and take the path leading down opposite you. Be careful in the descent.

Continue the Houëlmont Tour, following the markings, and you will arrive at the road (diversion set up in May 2020 after a rock slide). Continue down the road and turn left before arriving at Bisdary stadium.

Near Bisdary stadium, continue the trail straight ahead in the forest

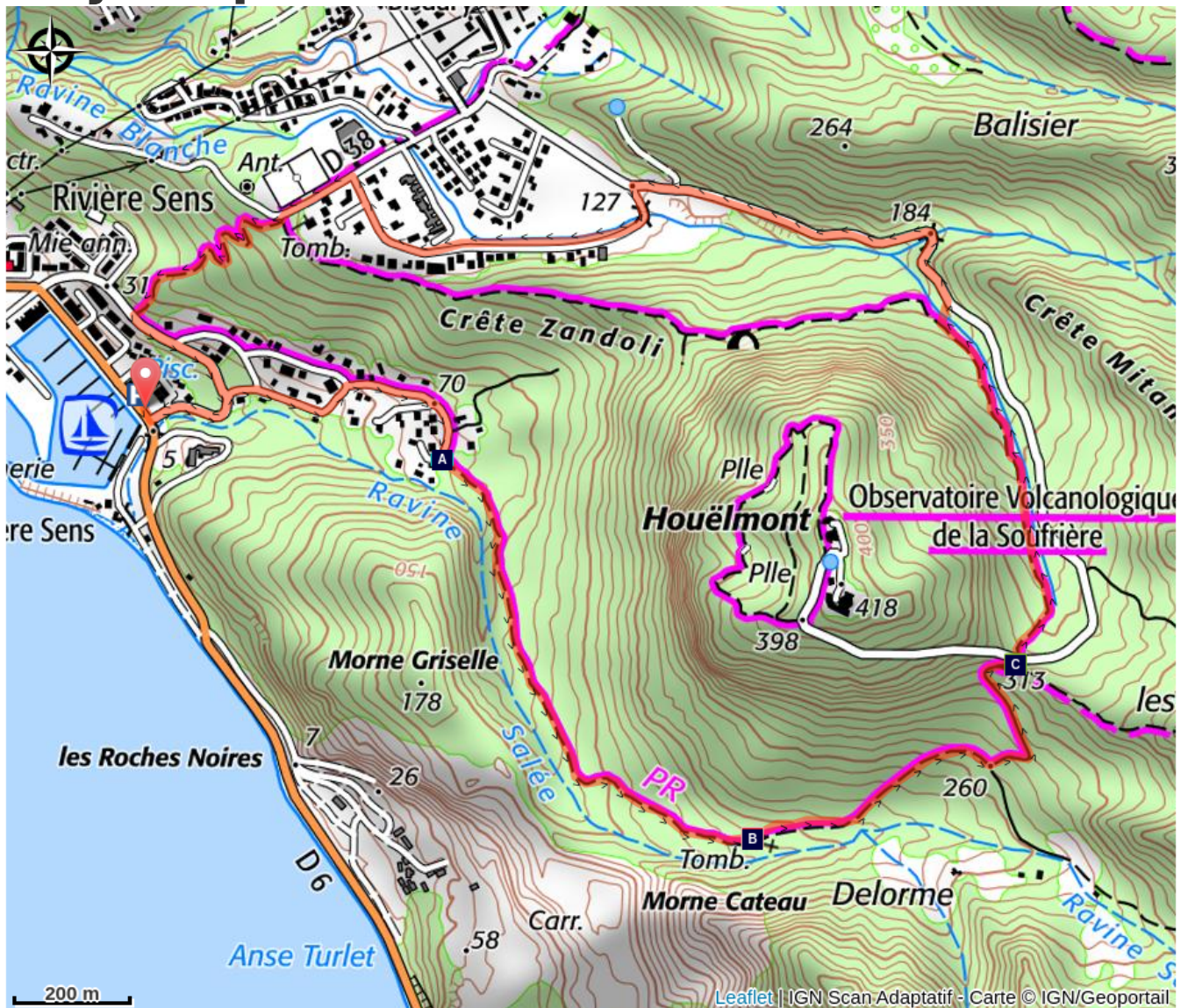
Go down as far as the road behind the marina (Rue de L'Espadon)

Turn left and stay on the pavement

Continue the trail until you go back down to your parking place.



# On your path...



 Go into the woodland (A)

 Grave (B)

 Dragonfly (C)

# All useful information

## **Advices**

**May 2020: diversion set up by the ONF after a rock slide. Make sure you follow the new markings (northern part of the trail).**

---

Go with a mountain guide to make the most of the site.

Don't set off after 3.30 pm. Take water with you and make sure your phone is charged

In this natural setting, you should be particularly careful and alert, especially since Guadeloupe is subject to natural risks. It is vital to act in a responsible way, so that everyone can enjoy the hike!

*Please note: unsupervised car parks.*

## **How to come ?**

### Access

**GPS starting point: Lat: 15,98271° N - Long: 61,71491° W.**

---

Park near the marina car park. There are plenty of parking spaces all along the road.

### Advised parking

Alongside the Gourbeyre marina

## **Information desks**

### **Syndicat d'initiative de Gourbeyre**

rond point "Dos d'Ane", Valkanaërs,  
97113 Gourbeyre

[contact@gourbeyre-tourisme.fr](mailto:contact@gourbeyre-tourisme.fr)

Tel : 05 90 92 21 64

<http://gourbeyre-tourisme.fr/>



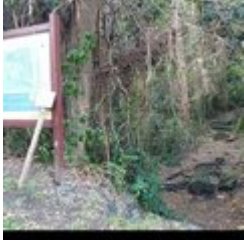
## **Source**

Rando Guadeloupe

<https://www.randoguadeloupe.gp/>

# On your path...

---



## Go into the woodland (A)

Entrance of the "Houëlmont Tour" trail.  
*Follow the yellow markings.*

Attribution : AAMG

---

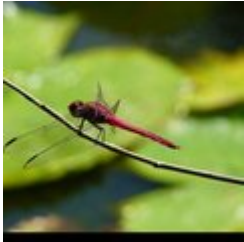


## Grave (B)

The grave is a reminder that the site was once occupied by religious, to whom the area was left.  
*Keep your eyes peeled so you don't miss the grave at the roadside.*

Attribution : AAMG

---



## Dragonfly (C)

This is a very inquisitive insect. There is no need to look for them, they will come to you.

Attribution : AAMG